

Precision Hydrogen 200 H₂ Generator

Application: GC Detector Gas, ICP-MS
Reaction Gas

Part number: 63-0200



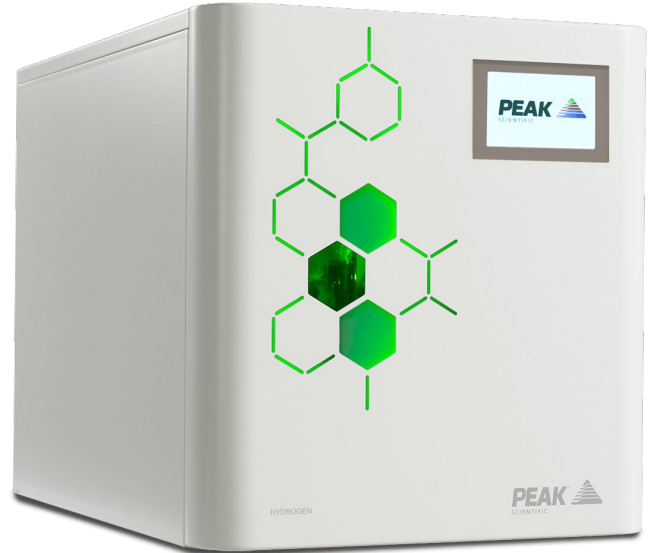
Description

The Precision Hydrogen generators are designed to provide the gas needed for detectors requiring hydrogen on demand for fuel gas, such as FID. One generator is capable of supplying multiple detectors, and are available in various flow rates to suit individual customer needs.

These generators utilize a Proton Exchange Membrane (PEM) to create the hydrogen gas from deionized water and a desiccant filtration stage is used to dry the gas. These generators utilize a Proton Exchange Membrane to create the hydrogen gas from deionized water and a desiccant filtration stage is used to dry the gas. The Precision Hydrogen generators are also suitable for providing collision gas for ICP-MS.

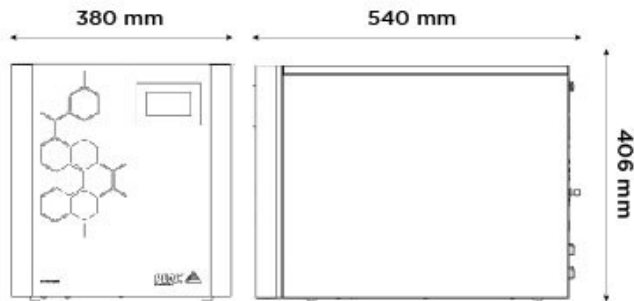
Precision Hydrogen gas generators come with various safety features as standard, giving you complete peace of mind in the laboratory and are a far safer, dependable and convenient alternative to cylinders.

- **Gas types** Hydrogen
- **Integrated compressor:** No
- **Application Types:**
GC Detector Gas, ICP-MS Reaction Gas



Key Features

- 99.9995% purity
- Suitable for GC detector gas
- Creates hydrogen on demand, minimal storage of hydrogen in the system
- Low maintenance and minimal running costs over product lifetime
- Internal leak detection with automatic shutdown
- Automatic loading pump as standard
- Simple maintenance, limited to replacing de-ionizer cartridge and silica gel



Technical Specifications

	Precision Hydrogen 200 H2 Generator
Gas Type	Hydrogen
Max Gas Flow:	200 *cc/min
Max Output Pressure:	100psi/6.9bar
Hydrocarbon Content:	Hydrocarbon free
Max Output Pressure:	100psi/6.9bar
Gas Outlets Fitting:	1 x 1/8" Swagelok compression fitting
Water Purity Requirements:	ASTM Type II (<1.0 uS / > 1MΩ)
Water Consumption:	Up to 0.24 L/Day
Start Up Time:	180 mins
Power Consumption:	367-422 Watts
Voltage:	100-230 V
Frequency:	50/60 Hz
Current:	6 Amps
Heat output:	1000
Max Operating Temp:	35°C / 95°F
Accreditations:	CSA, CE, FCC
Size (HxWxD) mm	406 x 380 x 540 mm
Size (HxWxD) Inches	16 x 15 x 21.3 inches
Generator Weight	31kg / 68.2lbs

* Flow rates are stated in sccm at 273.15K and 1.01bar

[PEAK Protected]™

Peak Scientific gas generators define the benchmark in reliability, convenience and performance in laboratories around the world, and come backed with a 12 month warranty. Beyond this period however you can ensure that your investment continues to be **[Protected]** by our comprehensive generator care cover.

Our world-class aftercare support packages deliver a program of scheduled preventative maintenance whilst giving you the reassurance of instant access to worldwide technical support and priority on-site response in the untimely event of a breakdown.

- For ordering parts visit: www.peakscientific.com/ordering/
- For service plans visit: www.peakscientific.com/service/service-plans/

Peak Scientific UK
Tel: +44 (0)141 812 8100
Fax: +44 (0)141 812 8200

Peak Scientific North America
Tel: +1-800-767-6532
Fax: +1-978-608-9503

Peak Scientific China
Tel: +86 21 5079 1190
Fax: +86 21 5079 1191
For a full list of our worldwide office locations, please visit:
Web: www.peakscientific.com
Email: discover@peakscientific.com

Peak Scientific's Quality Management System conforms to: ISO:9001



0003